

Entering and Using BOQ 2.0 Data in PIDS for Coaches



Entering a BOQ 2.0

1. Go to the Benchmarks of Quality 2.0 Forms dashboard by using the side menu or the pull-down menu from the black bar at the top of the screen
2. Click on "Add New BOQ"
3. Enter the form date and team members
4. Scroll down to see the indicators
5. Enter the ratings by clicking the arrow next to the word "Select" and click on the appropriate choice. Do this for each indicator
6. When all ratings are entered, click save

The screenshot shows the PIDS dashboard interface. On the left is a 'Home' sidebar with buttons for 'ASQ:SE Screenings' (33), 'Other Social Emotional Screenings' (0), 'Behavior Incident Reports' (83), 'Benchmarks Of Quality 2.0 Forms' (1), and 'Children' (33). At the top right is a navigation bar with a dropdown menu open, listing various system components. The main content area displays a table of BOQ 2.0 indicators. Each row includes an indicator ID (MIO 36-41), a description, and a dropdown menu for rating. A 'Total In Place' row shows 0 (0%). At the bottom are 'Previous', 'Next', 'Cancel', and 'Save' buttons.

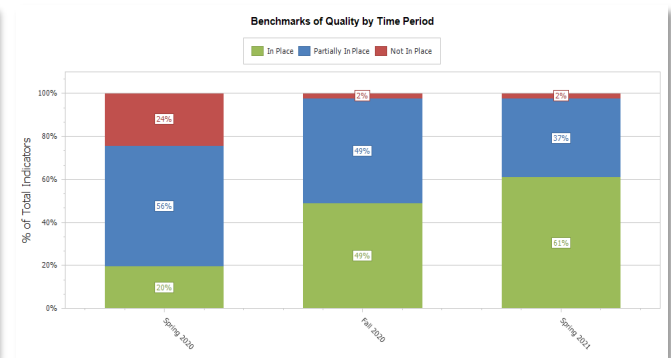
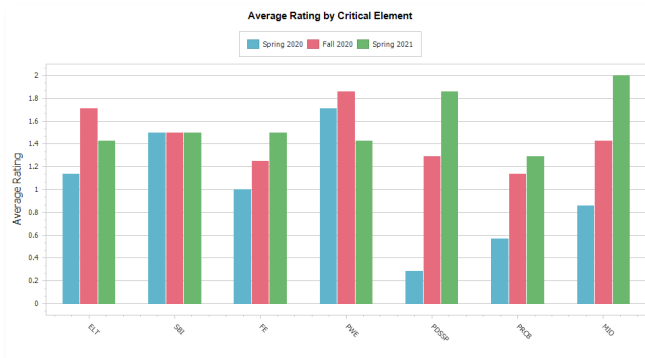
MIO	Indicator ID	Description	Rating
MIO	36	The program leadership team monitors implementation fidelity of the components of program and implementation and uses data for decision making about their implementation goals.	--Select--
MIO	37	The program measures implementation fidelity of the use of Pyramid Model practices by classroom teachers and uses data on implementation fidelity to make decisions about professional development and coaching support.	--Select--
MIO	38	The program collects data on behavior incidents and program actions in response to behavior and uses those data to address child and teacher support needs.	--Select--
MIO	39	Behavior incident and monthly program action data are analyzed on a regular basis to identify potential issues related to disciplinary action bias.	--Select--
MIO	40	Program-level data are summarized and shared with program staff and families on a regular basis.	--Select--
MIO	41	Data are used for ongoing monitoring, problem solving, ensuring child response to intervention, and program improvement.	--Select--
Total In Place			0 (0%)

Entering and Using BOQ 2.0 Data in PIDS for Coaches

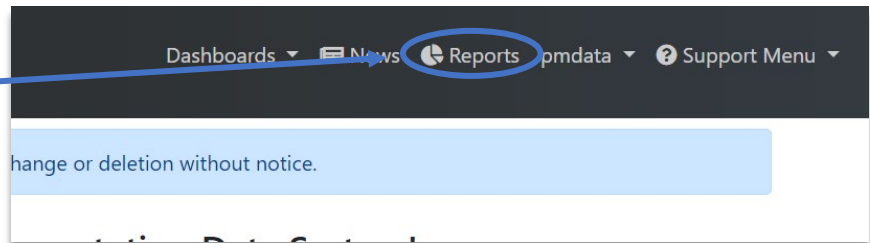


Viewing BOQ 2.0 Report

The Benchmarks of Quality 2.0 Report gives the average rating by critical element over time.



- Navigate to BOQ Reports
 - Select "Reports" from the upper right hand corner
 - In the search box, replace the words, "Enter text to search" with the word BOQ
- Find the "Benchmarks of Quality Trend Report"
- Click "Select" (right column)
- Enter the start and end date for the time range you'd like to display
- Click "Run Report" (upper left corner)



Report Name	Category	Description	Last Used On	Select	Documentation
Benchmarks of Quality Change Report	BOQ	This report displays the changes in indicator status for the most recent 5 Benchmarks of Quality 2.0 forms across time.	04/05/2022 10:48 AM ET	Select	Documentation
Benchmarks of Quality FCC Version 1 Change Report	BOQ	This report displays the changes in indicator status for the most recent 5 Benchmarks of Quality FCC Version 1 forms across time.	11/28/2020 09:38 PM ET	Select	Documentation
Benchmarks of Quality FCC Version 1 Data Export Report	Data Export	This report exports details about Benchmarks of Quality FCC Version 1 records to an Excel file.		Select	Documentation
Benchmarks of Quality FCC Version 1 Trend Report	BOQ	This report displays details about critical elements for each Benchmarks of Quality FCC Version 1 form in the reporting window. A graph of average ratings for each critical element over time is also displayed.	11/28/2020 09:40 PM ET	Select	Documentation
Benchmarks of Quality FCC Version 2 Change Report	BOQ	This report displays the changes in indicator status for the most recent 5 Benchmarks of Quality FCC Version 2 forms across time.		Select	Documentation
Benchmarks of Quality FCC Version 2 Data Export Report	Data Export	This report exports details about Benchmarks of Quality FCC Version 2 records to an Excel file.		Select	Documentation
Benchmarks of Quality FCC Version 2 Trend Report	BOQ	This report displays details about critical elements for each Benchmarks of Quality FCC Version 2 form in the reporting window. A graph of average ratings for each critical element over time is also displayed.		Select	Documentation
Benchmarks of Quality Trend Report	BOQ	This report counts of ratings of critical elements for each Benchmark of Quality in the reporting window across the selected programs. A graph of average ratings for each critical element over time is also displayed.	06/16/2023 02:58 PM ET	Select	Documentation
BOQ Data Export Report	Data Export	This report exports details about BOQ records to an Excel file.	11/01/2022 07:27 AM ET	Select	Documentation